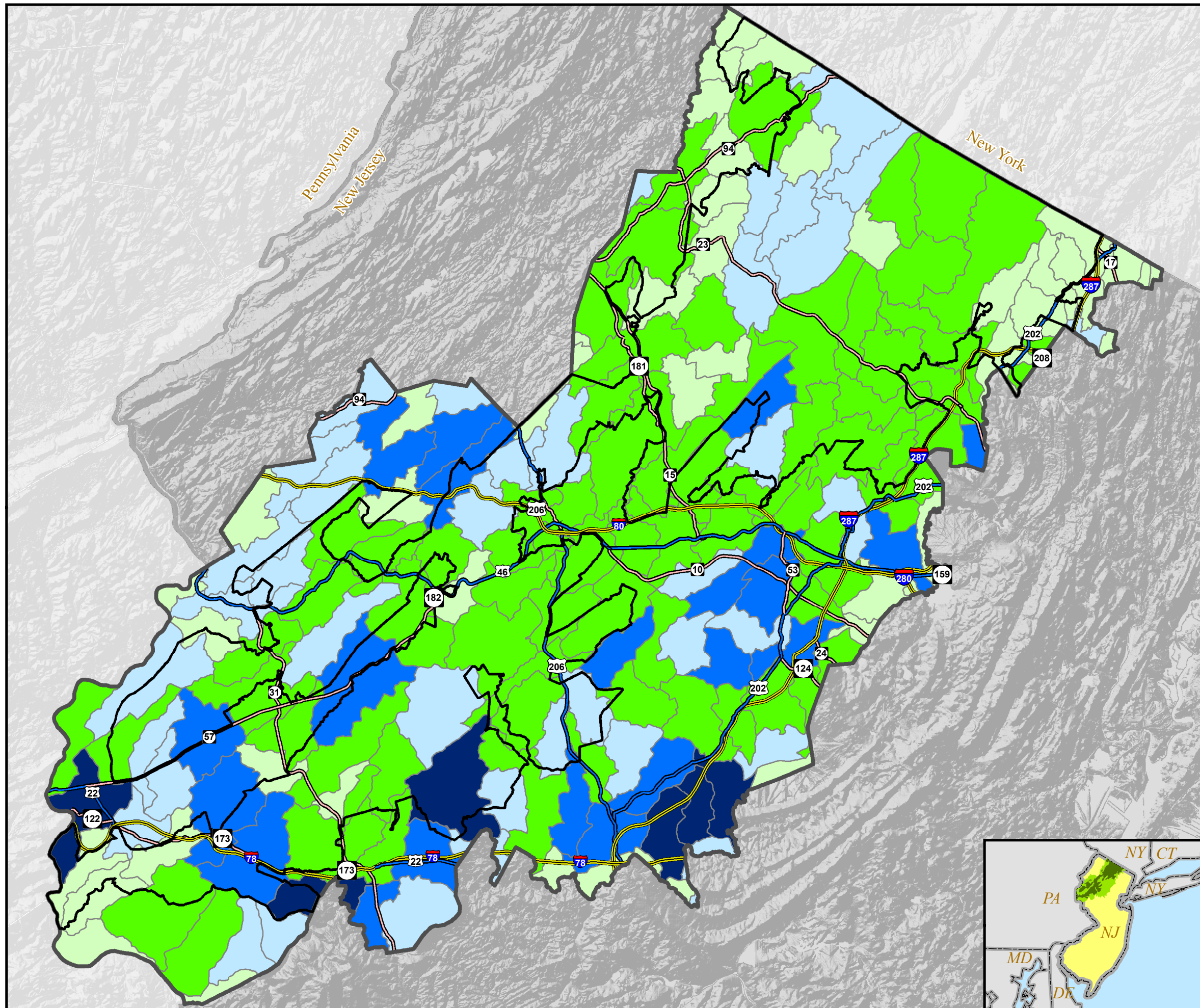


LAND USE CAPABILITY
Water Availability Map
(Map 2 of 5)

Source:
New Jersey Highlands Council, 2007



Legend

- Roadway Network**
- Interstate Highways
 - U.S. Routes
 - State Routes
- Highlands Region
- Preservation Area Boundary
- Hydrologic Unit Code(HUC14)

Net Water Availability(Conditional) By HUC14

Million Gallons Per Day (MGD)

- 0.00 - 0.01
- 0.01 - 0.05

Net Water Availability(Unconditional) By HUC14

Million Gallons Per Day (MGD)

- 0.00 - 0.05
- 0.05 - 0.10
- 0.10 - 0.39



0 1.5 3 6 9 12 Miles

The information contained on this map is the best available according to the Highlands Council. However, unintentional inaccuracies may occur, particularly where data or information is derived from sources other than the Highlands Council. The Highlands Council cannot be responsible for the misuse or misinterpretation of the information presented herein. Therefore, under no circumstances shall the State of New Jersey or specifically, the Highlands Council be liable for any actions taken or omissions made from reliance on any information contained herein from whatever source nor shall the State be liable for any other consequences from any such reliance. Additional sources of information may include NJDOT and NJDEP GIS digital data, but this secondary product has not been verified by NJDEP.

Prepared By:
New Jersey Highlands Council
November 2007

